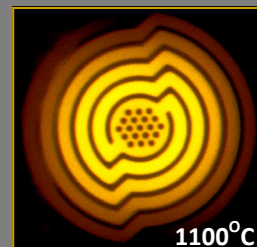
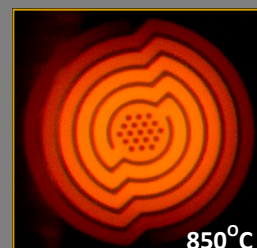
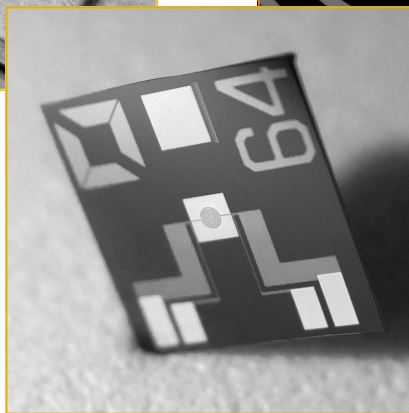
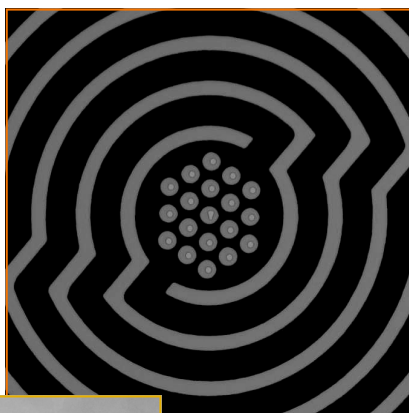
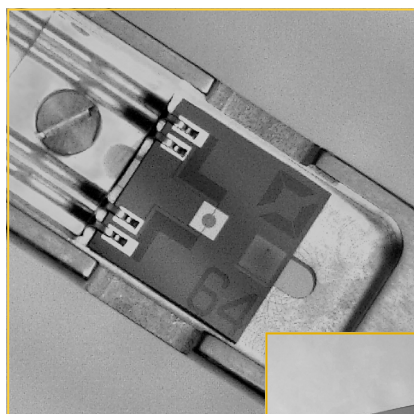


## MEMS IN-SITU HEATING

- Temperature reading and control feedback
- Tested up to 1100°C
- Excellent temperature uniformity in the sample area
- Dedicated, ultrathin and location tagged sample area
- Heating settling time of few seconds
- Ultra small lateral drift and lateral displacement at high temperatures
- Compatible with SEM, TEM and X-ray applications
- Compatible with Norcada and Hitachi Holders
- Hermetically sealed to work well with Liquid and Gas flows
- Provided with control software and sample biasing option



### CONTACT:

NORCADA Inc.  
4465 - 99 St.  
Edmonton, AB  
T6E 5B6  
Canada

Phone: 780-431-9637  
Toll Free: 877-431-9636  
Fax: 780-431-9638  
E-mail: [info@norcada.com](mailto:info@norcada.com)

### SALES CONTACT IN JAPAN:

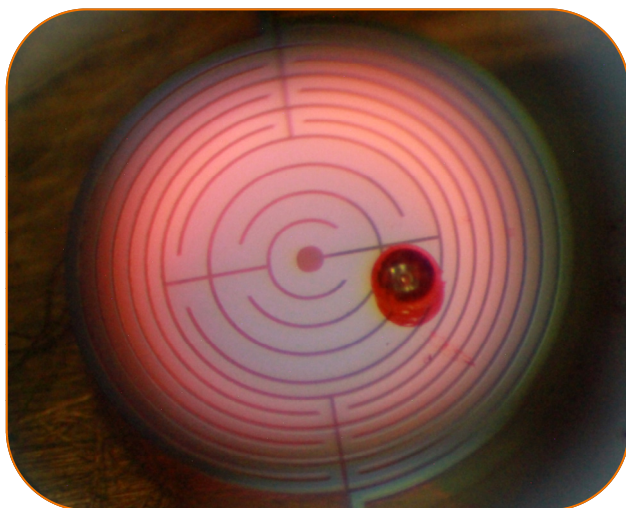
LxRay Co., Ltd.  
3-28-22, Koshienguchi, Nishinomiya  
Hyogo 663-8113  
Japan

Tel: +81-798-31-0500  
Fax: +81-798-31-0505  
[www.lxray.jp](http://www.lxray.jp)

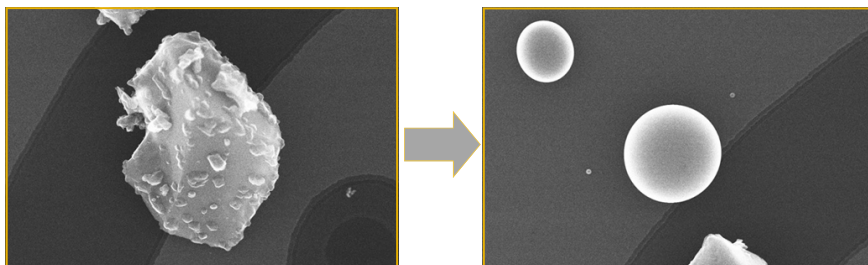
Customizable designs for your electrode configuration and heater designs  
Manufactured, inspected, tested and packaged in a Class 100 cleanroom

## LARGE AREA MEMS IN-SITU HEATING

- Temperature reading and control feedback
- Tested up to 1100°C
- Excellent temperature uniformity in the sample area
- Sample viewing holes and sample wells
- Heating settling time of few seconds
- Ultra small lateral drift and lateral displacement at high temperatures
- Compatible with SEM, TEM and X-ray applications
- Compatible with Norcada and Hitachi Holders
- Hermetically sealed to work well with Liquid and Gas flows

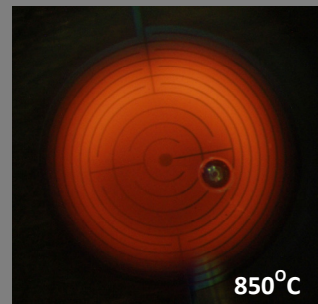


Customizable designs for your electrode configuration and heater designs  
Manufactured, inspected, tested and packaged in a Class 100 cleanroom

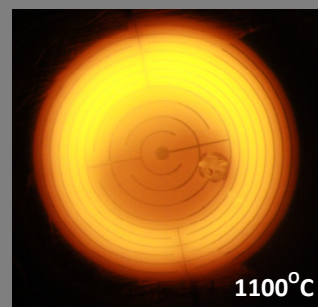


**Copper particles melting on Norcada Heating Chips**

SEM images Courtesy of Hitachi High-Technologies Canada



850°C



1100°C

### CONTACT:

NORCADA Inc.  
4465 - 99 St.  
Edmonton, AB  
T6E 5B6  
Canada

Phone: 780-431-9637  
Toll Free: 877-431-9636  
Fax: 780-431-9638  
E-mail: [info@norcada.com](mailto:info@norcada.com)

### SALES CONTACT IN JAPAN:

LxRay Co., Ltd.  
3-28-22, Koshienguchi, Nishinomiya  
Hyogo 663-8113  
Japan

Tel: +81-798-31-0500  
Fax: +81-798-31-0505  
[www.lxray.jp](http://www.lxray.jp)